

3.7 – RemoteApp and start a program instead of the whole desktop

There are two ways to start a program:

Spark View (RDP) 6.3.0

[Spark View \(VNC\)](#) [Spark View \(SSH\)](#) [Spark View \(TELNET\)](#) [Spark View \(Remote Assistance\)](#) [Spark View \(SMB/SFTP\)](#) [Spark View \(RDP Shadowing\)](#)

Spark Gateway: *default port is 80 if it's not specified (ip:port).

General

Display

Local

Programs

Advanced

Multi-Monitor

Start the following program on connection:

Program path and file name

Start in following folder

RemoteApp:

Exe or file

Arguments

None

Clear

Delete

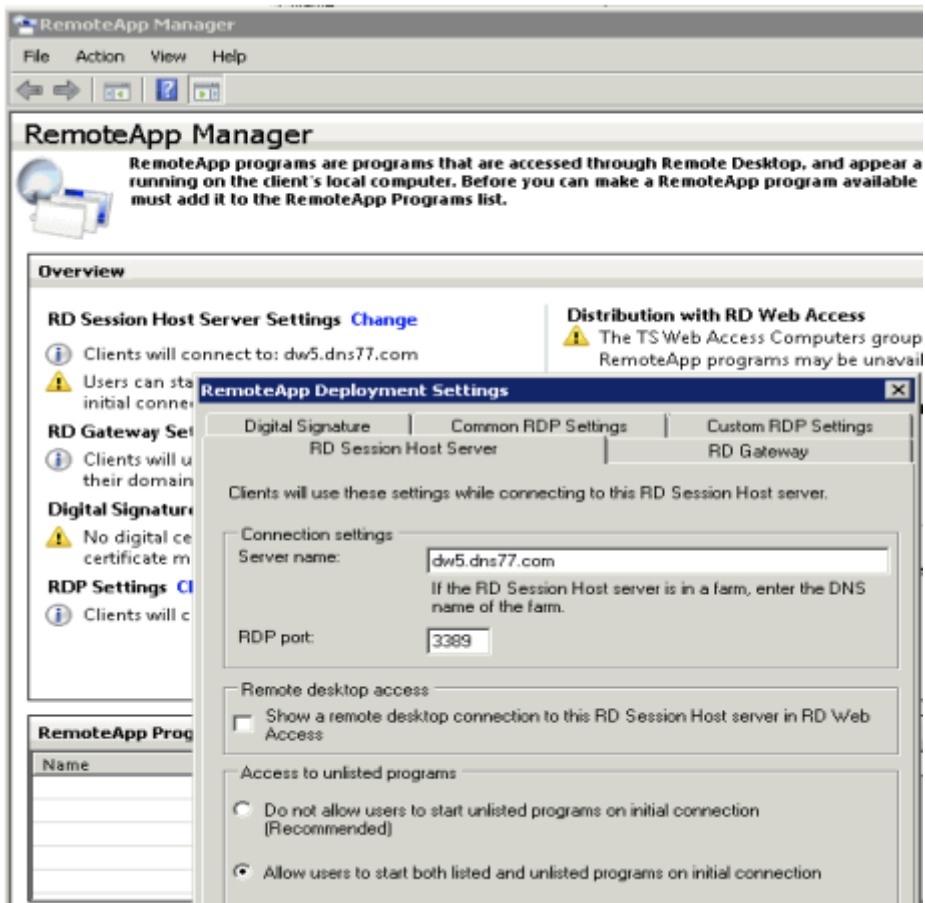
Save

Connect

☐ Open in existing window

[Version history](#) Copyright © Remote Spark Corp. www.remotespark.com

Start a program on connection use a program as shell of Windows. That means you can only use one program in this session. You'll need to create 2 sessions to start 2 programs (this user will use two SparkView licenses then). To configure "Start a program on connection" in servers.json file, you need to specify "command" and "directory" options. Please make sure you allow users to start unlisted programs on Windows 2008:



If you are using Windows Server 2012 R2 you can configure this in the Collection properties sheet by using Server Manager. By default, only programs in the RemoteApp Programs list can be started when a user starts a Remote Desktop Services session. You can also use following policy or registry to do the same:

- Policy path: Windows Components\Remote Desktop Services\Remote Desktop Session Host\Connections
- Scope: Machine Supported on: At least Windows Server 2008
- Registry settings:
 - HKLM\SOFTWARE\Policies\Microsoft\Windows NT\Terminal
 - Services!fAllowUnlistedRemotePrograms

RemoteApp was introduced in RDP 6.1. All RemoteApps running on client side can share only one session, even you are running thousands of RemoteApps. To configure RemoteApps in servers.json, you need to specify "remoteProgram", "remoteWorkDir", and "remoteArgs" options.

RemoteApp window will be automatically resized (no reconnection needed) when you resize the browser window. Here is a example for setting up RemoteApp in servers.json:

```
{
  "id": "RemoteAppWord",
  "displayName": "RemoteApp WORD",
  "server": "192.168.8.119",
  "icon": "kbd.png",
```

```
"protocols": "rdp",
"rdp": {
  "username": "Administrator",
  "mapClipboard": true,
  "password": "password",
  "remoteProgram": "||WINWORD"
}
},
```

If you are using alias name of the RemoteApp, please make sure there are || before it.

For a good user experience, it's better to start program without splash screen, also set time limit for disconnected session on RDSH:

1. Log on to the terminal server as an administrator.
2. Start the Local Group Policy Editor. To do this, click **Start**, click **Run**, type **gpedit.msc**, and then click **OK**.
3. Locate the following node:

Computer Configuration\Administrative Templates\Windows Components\Terminal Services\Terminal Server\Session Time Limits

“ **Note:** The policy settings are also located under **User Configuration\Administrative Templates\Windows Components\Terminal Services\Terminal Server\Session Time Limits**

Please check following links for more information:

- http://en.wikipedia.org/wiki/Remote_Desktop_Services#RemoteApp
- [http://technet.microsoft.com/en-us/library/cc753112\(v=ws.10\).aspx](http://technet.microsoft.com/en-us/library/cc753112(v=ws.10).aspx)
- [http://technet.microsoft.com/en-us/library/cc730673\(WS.10\).aspx](http://technet.microsoft.com/en-us/library/cc730673(WS.10).aspx)

Configure RemoteApp RDP settings:

<http://technet.microsoft.com/en-us/library/cc733144.aspx>

For better performance, you may want to add following lines in the “Custom RDP settings” page:

```
disable full window drag:i:1
disable menu anims:i:1
disable themes:i:1
disable wallpaper:i:1
```

Please be aware not all applications can run on RemoteApp and Terminal Server/RDSH environment. You may want to choose a Virtual Machine solution instead or connecting to Hyper-V console. All applications are guaranteed to work with Hyper-V console connection, but it doesn't audio, video etc advanced RDP features.

Revision #2

Created 5 April 2022 10:54:34 by Julian

Updated 11 June 2024 12:56:27 by Julian