

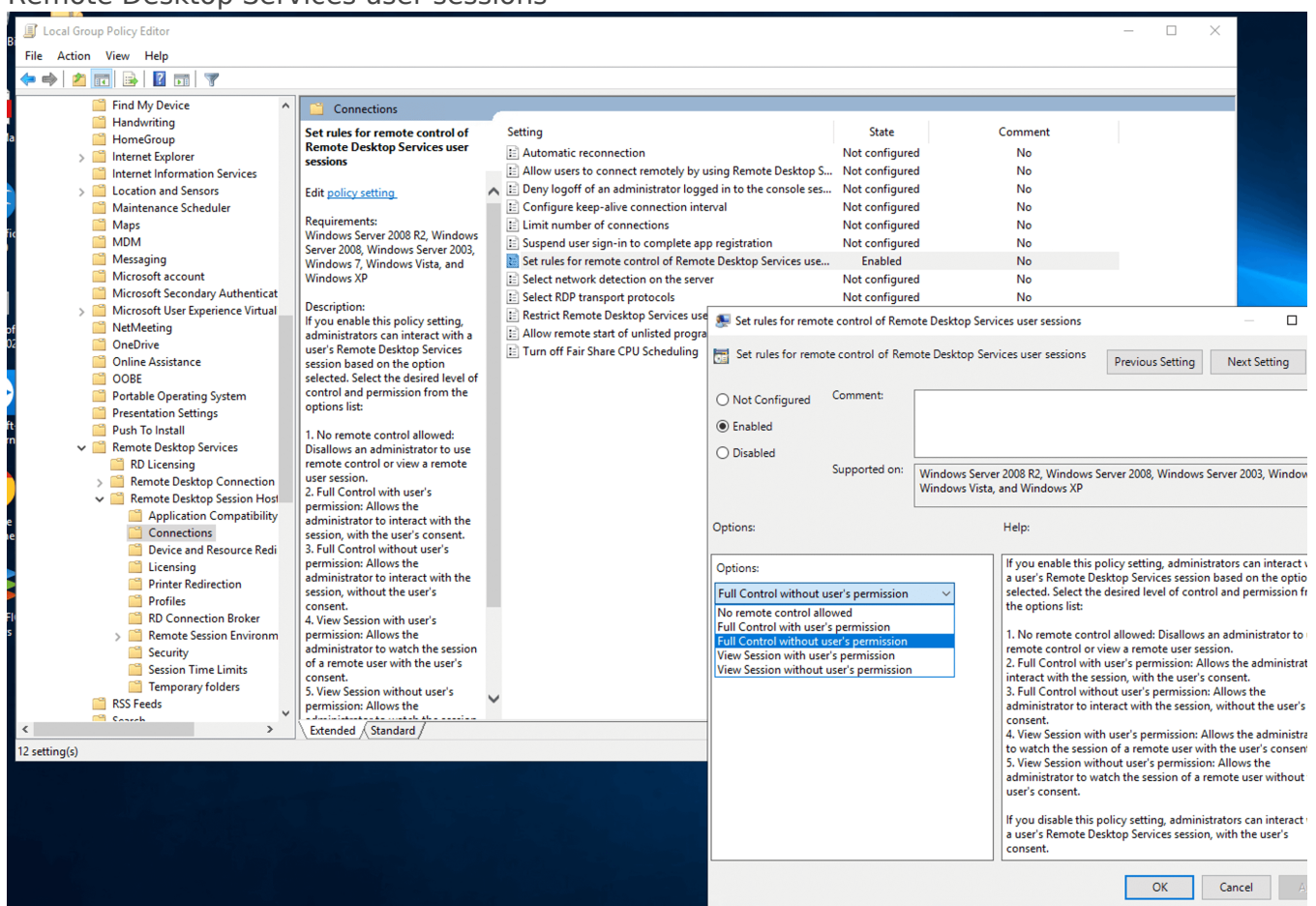
3.13 – Native RDP shadowing (join any active RDP sessions)

Since 6.0, Spark View can use shadow.html to shadow any active RDP sessions on the RDP server, even they are connected from another RDP client, which is same as the mstsc.exe /v:server /shadow:x /control.

Remote shadowing setting is configured using a Group Policy or by registry modification. You can configure whether you need to request the user confirmation to connect, and whether view or control is allowed in the shadow session.

Target RDP server requirements:

- Enable remote control: Run gpedit.msc -> **Computer Configuration / Administrative Templates / Windows Components / Remote Desktop Services / Remote Desktop Session Host / Connections** and enable the policy "Set rules for remote control of Remote Desktop Services user sessions"



Instead of enabling the policy, you can set the necessary value in the DWORD registry parameter Shadow in the **HKLM\SOFTWARE\Policies\Microsoft\Windows NT\Terminal Services** registry key. The allowed values are:

- 0 – disable remote control;
- 1 — full control with user's permission;
- 2 — full control without user's permission;
- 3 — view session with user's permission;
- 4 — view session without user's permission.

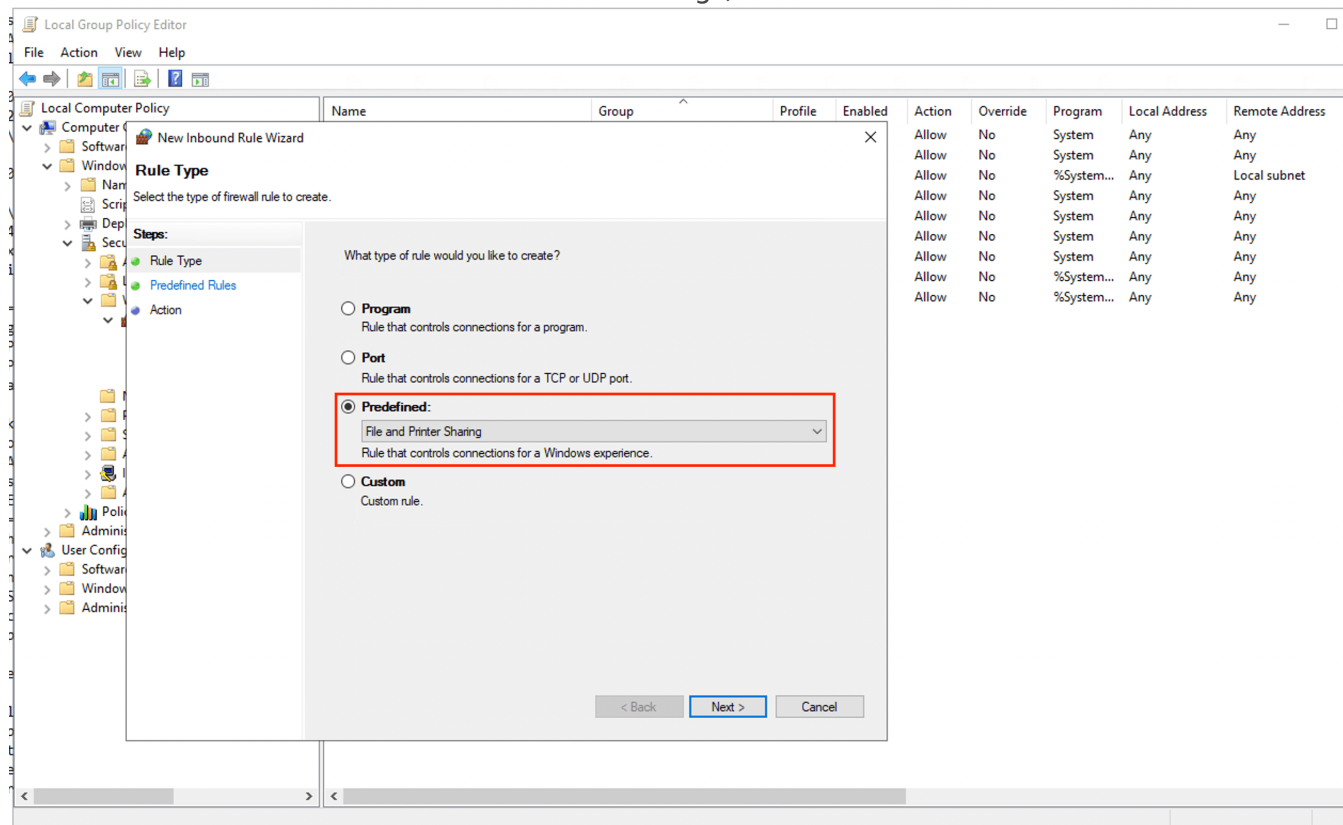
By default, this registry parameter is not set and the shadow connection is performed in full control mode with user permissions.

- Enable file and printer sharing
- Enable native RDP session shadowing ("nativeShadowing = true" in gateway.conf)
- Make sure that SMB port 445 is open in the firewall and the RDP server

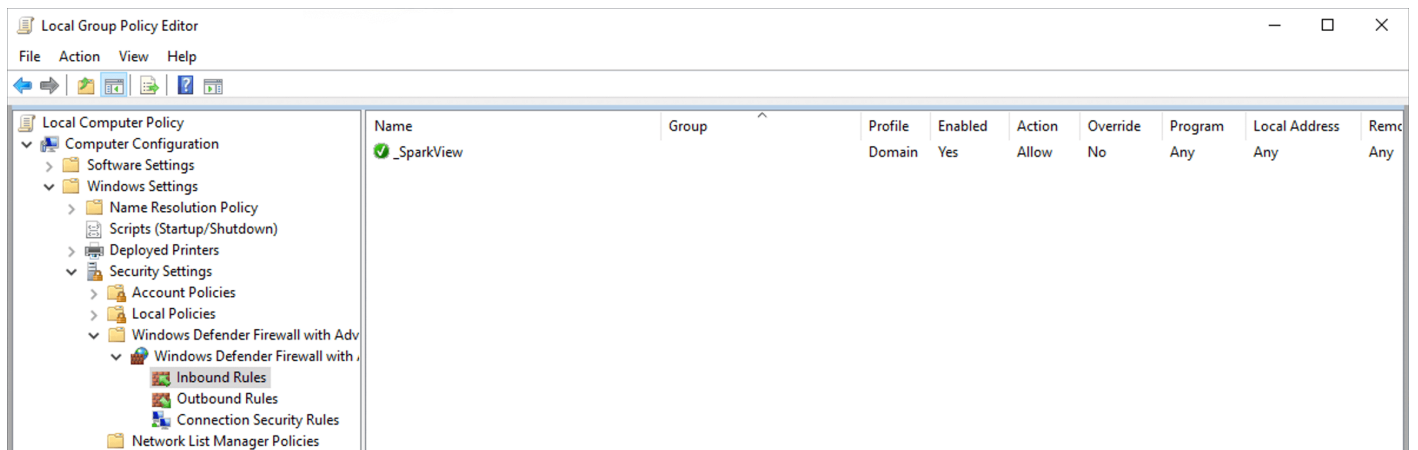
Add rule to allow traffic to SMB/CIFS and RPC

To add a firewall rule to allow TCP/445 (SMB/CIFS) and TCP/135 (RPC):

1. Go to Computer Configuration > Policies > Windows Settings > Security Settings > Windows Firewall with Advanced Security > Windows Firewall with Advanced Security - LDAP > Inbound Rules
2. Right-click and choose "New Rule"
3. Choose "Predefined" and "File and Printer Sharing", then click "Next"



4. Check the following, then click "Next":
 - "File and Printer Sharing (NB-Session-In)"
 - "File and Printer Sharing (SMB-In)"
5. Select "Allow the connection" and click "Finish"



<https://sparkview-server/shadow.html>

Spark View Native RDP Shadow 6.3.0

[Spark View \(RDP\)](#) [Spark View \(VNC\)](#) [Spark View \(SSH\)](#) [Spark View \(TELNET\)](#) [Spark View \(SMB/SFTP\)](#) [Spark View \(Remote Assistance\)](#)

Spark Gateway: *default port is 80 if it's not specified (ip:port).

RDP Server:

Username:

Password:

Domain:

Session ID:

Control: ☒ Allows control of the session when shadowing.

Silent: ☐ Allows shadowing without user consent. Only works when the correct policy is set on the RDP server.

RDP server:

1. Run gpedit.msc -> Computer Configuration / Administrative Templates / Windows Components / Remote Desktop Services / Remote Desktop Session Host / Connections and enable the policy "Set rules for remote control of Remote Desktop Services user sessions"
2. Enable File and printer sharing

Copyright © Remote Spark Corp. www.remotespark.com

Revision #8

Created 5 April 2022 12:01:23 by Julian

Updated 11 June 2024 13:02:06 by Julian